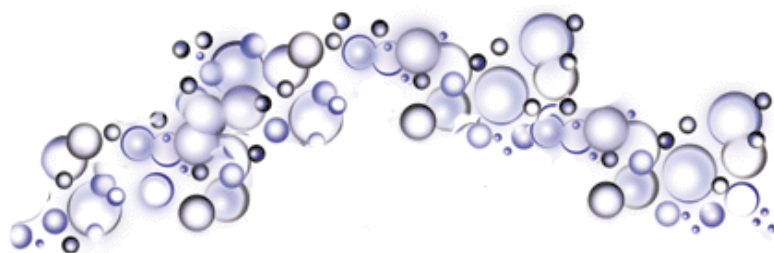






Rolence **SONIKLEEN** *ULTRASONIC CLEANERS*



SONIKLEEN offer cleaning that is faster, more thorough, and safer than any other method. This method of cleaning is far more effective than scrubbing, soaking and steam cleaning. It's powerful enough to remove heavy oils, waxes, or proteins, penetrating enough to deflux circuit boards and SMDs, yet gentle enough to clean tiny precision components and assemblies.

Ultrasonic sound waves moving through a cleaning solution, create an effect called cavitation, the rapid formation and implosion of microscopic bubbles. Heat enhances the process. The deep-cleaning action of ultrasonics removes even the most stubborn dirt and contaminants, in the most inaccessible places.



				
Model No.	R-1510	R-2510	R-5510	R-8510
Tank Size	10" x 12" x 11.5" (250 x 300 x 30mm)	13.5" x 12" x 11.5" (330 x 300 x 290mm)	16" x 15.5" x 14.5" (400 x 300 x 40mm)	19.5" x 11.5" x 6" (500 x 300 x 150mm)
Overall Size	6" x 5.5" x 4" (150x 140 x 100mm)	9.5" x 5.5" x 4" (240 x 140 x 100mm)	11.5" x 9.5" x 6" (290 x 240 x 150mm)	24" x 18" x 14.5" (600 x 450 x 360mm)
Tank Capacity	0.5 Gallon (1.9 L)	0.75 Gallon (2.8 L)	2.5 Gallon (9.5 L)	5.5 Gallon (20 L)
Weight	7 lbs (3 Kg)	9lbs (4 Kg)	14 lbs (6 Kg)	26 lbs
Frequency	40 KHz	40 KHz	40 KHz	40 KHz
Drain	Yes	Yes	Yes	Yes
Mechanical Timer	Yes	Yes	Yes	Yes



Rugged 60 minute
mechanical timer.



Our accessories turn your ultrasonic cleaner into a powerful, multi-purpose cleaning machine. You can choose from solid insert trays, perforated insert trays, mesh baskets, baskets (glass, stainless or polypropylene), beaker positioning covers and tank covers. Parts should not be allowed to rest on the tank bottom..